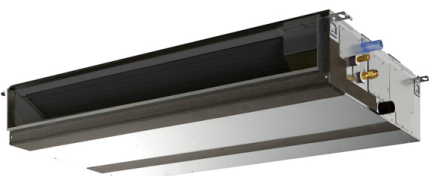


# Air Conditioning

## Product Information

### PEFY-P80VMA-E : Indoor Unit

Ceiling Concealed Ducted



The PEFY-P-VMA-E ducted indoor unit is concealed within the ceiling space to allow unobtrusive air conditioning. Flexibility of duct layout allows air flow patterns to be arranged to suit any application.

## FEATURES



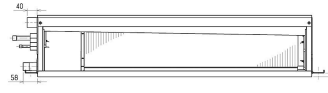
### INDOOR

Heating Capacity (kW) (nominal)	10
Cooling Capacity (kW) (nominal)	9
High Performance Heating Capacity (kW) (UK)	10
COP Priority Heating Capacity (kW) (UK)	9.4
Cooling Capacity (kW) (UK)	8.5
Cooling Capacity (Hi-Sens Mode) (kW) (UK)	6.5
SHF (UK)	0.72
SHF (Hi-Sens Mode) (UK)	0.78
Heating Power Input (kW) (nominal)	0.12
Cooling Power Input (kW) (nominal)	0.14
Airflow (m <sup>3</sup> /min) - Lo-Mi-Hi	14.5 - 18 - 21
External Static Pressure (Pa)	35 - 70 - 150
Sound Pressure Level (dBA) - Lo-Mi-Hi	26 - 29 - 34
Weight (kg)	32
Dimensions (mm) Width	1100
Dimensions (mm) Depth	732
Dimensions (mm) Height	250
Electrical Supply	220-240V, 50HZ
Phase	SINGLE
Running Current (A) - Heating / Cooling	1.04 / 1.15
Fuse Rating (BS88) - HRC (A)	6
Mains Cable No. Cores	3

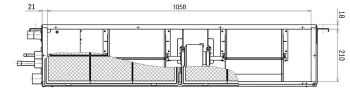
### DIMENSIONS

PEFY-P80VMA-E

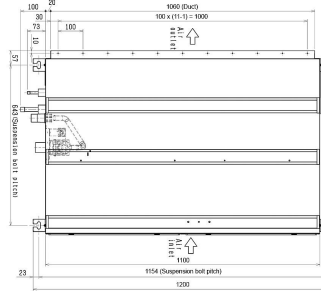
Front View >



Rear View >



Upper View >



Side View >

